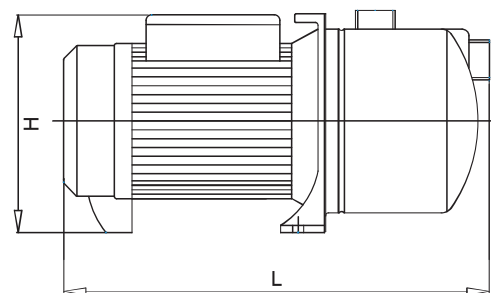
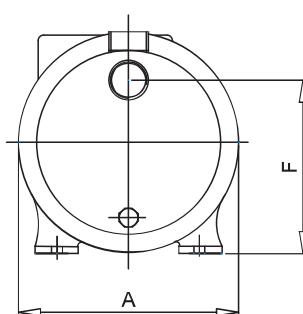
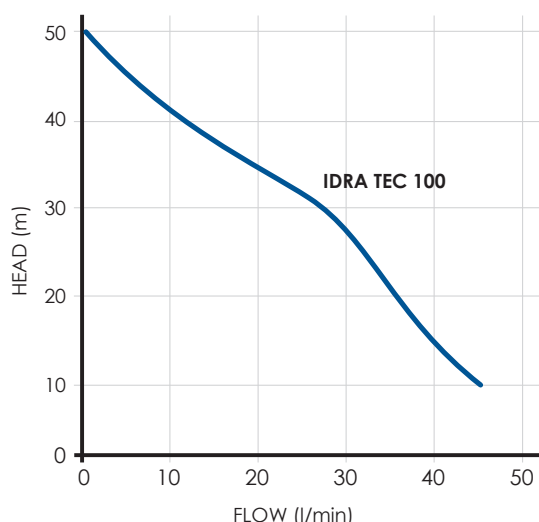


# OSIP Pumps Idra Tec 100M



- Provides strong and steady water pressure for your home and garden.
- Ideal for clean water from tanks, wells or mains supply.
- Able to draw water from depth (up to 7m) helps when water supply is low or far away.
- Stainless steel self priming pump that can run with air in pipes.
- Automatically turns on and off when you turn tap on and off.
- Built in pump protection that stops the pump if the water runs out.
- Easy to install, includes fittings, thread tape, controller and instructions.
- Pump made in Italy, controller made in Spain.



## PERFORMANCE GUIDE

| Code             | Max Head (m) | Max Flow (l/min) | Max Pressure (psi) | Max Suction Depth (m) | Inlet (mm) | Outlet (mm) |
|------------------|--------------|------------------|--------------------|-----------------------|------------|-------------|
| PUOSIPDRATEC100M | 50           | 45               | 71                 | 7                     | 25         | 25          |

## ELECTRICAL DATA

| Code             | Current Type | kW   | Hp | Amps | RPM/min | Capacitor (μF) | Insulation Class | Voltage (V) | Frequency (Hz) |
|------------------|--------------|------|----|------|---------|----------------|------------------|-------------|----------------|
| PUOSIPDRATEC100M | Single       | 0.75 | 1  | 4.8  | 2800    | 16             | F                | 230         | 50             |

## DIMENSIONS + WEIGHTS

| Code             | A (mm) | H (mm) | F (mm) | L (mm) | Weight (kg) |
|------------------|--------|--------|--------|--------|-------------|
| PUOSIPDRATEC100M | 200    | 260    | 157    | 366    | 11          |

