



# BEARINGS PRICE BOOK

Version 1



# WE STOCK A WIDE RANGE OF PRODUCTS

to support businesses, large or small, from various industries throughout the lower North Island

SOCO are a leading importer, reseller and service provider of electric motors, pumps, drives, gearboxes, bearings, power transmission and component products. We are located in Palmerston North and service a range of industries throughout the lower North Island, from growing, processing, manufacturing through to infrastructure. By being locally owned and operated, we understand our customer's industries and are responsive to their changing requirements.

Our loyal customers know us for our combination of leading product brands, application proficiency, broad engineering expertise, service, experienced repair and diagnostic testing.



We partner with Rotating Machinery Supplies Ltd (RMS) and Motor Technologies Ltd (MTL) to form EMG (Electric Motor Group). EMG is the national importer and distributor for leading global brands like ABB and Brook Crompton. EMG is also a direct importer for an extensive range of electric motors, variable speed drives and speed reducers that exceed New Zealand minimum efficiency ratings.

Rotating Machinery Supplies (RMS) have locations in Hamilton and Christchurch. Brook MTL are located in Auckland.



## DISCOUNT STRUCTURE

Your discount applies to all products within this price book only. If you have any questions regarding your discount please contact one of our team members on 06 354 3651 or email [sales@soco.co.nz](mailto:sales@soco.co.nz).

Your Discount

%



## Deep Groove Ball - 60, 62, 63 series

Page 3 - 5



## Single Row Angular Contact - 72, 73 series

Page 6 - 7



## Double Row Angular Contact - 32, 33 series

Page 8 - 9



## Metric Tapered Roller - 302, 303, 313, 320, 322, 323 series

Page 10 - 15



## Single Thrust Ball - 511, 512 series

Page 16 - 17



## Cylindrical Roller - 2, 3, 22, 23 series

Page 18 - 21



## Self Aligning Bearings - 12, 22 series

Page 22 - 23



## Spherical Roller - 222, 223 series

Page 24 - 25



## Spherical Plain - GE, GEG series

Page 26 - 27



## Insert Grub Screw - UC series

Page 28 - 29



## Insert Eccentric Locking Collar - AEL series

Page 30



## Rod Ends - PHS, POS, RBL series

Page 31 - 33



## Trailer Wheel Bearing Kits

Page 34



## Insert Bearing and Housing Conversions plus Types

Page 35 - 36



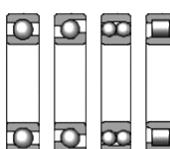
## Measurement Conversions

Page 37



## What a bearing number means

Page 38



## Roller Bearing - Selections + Parts

Page 39



## Power Transmission - Belts + Pulley Types, Chains + Sprocket Types, Taperlock Bushes + Coupling Types

Page 40-42



# ADDITIONAL PRODUCTS WE STOCK OR SOURCE

Please contact us for more information on 06 354 3651 or [sales@soco.co.nz](mailto:sales@soco.co.nz)

## OTHER BEARING PRODUCTS



## POWER TRANSMISSION



## ELECTRIC MOTORS + VIBRATORS + DRIVES

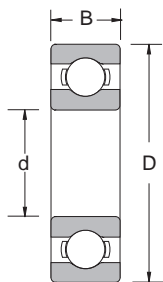


## DOMESTIC + INDUSTRIAL PUMPS



Electric Motors | Pumps | Drives | Bearings | Power Transmission | Workshop Services  
06 354 3651 | [sales@soco.co.nz](mailto:sales@soco.co.nz) | [www.soco.co.nz](http://www.soco.co.nz) | 471 Tremaine Avenue, Palmerston North

Price List - Prices shown may vary depending on brand, are ex-warehouse, exclude gst and may change without notice. Terms of trade are available at [www.soco.co.nz/terms-and-conditions](http://www.soco.co.nz/terms-and-conditions). Freight charges may apply. Not all items are held in stock: ordered on request. Images shown may differ from actual. Dimensions stated are a general guide only, please refer to product manual.



- We stock a range of bearings from multiple internationally renowned brands including NSK, FAG, Koyo and Timken
- Other styles and sizes are available including:
  - Miniature
  - Imperial EE, RLS, RMS series
  - Thin series 68 & 69
  - Steel shields & Snap ring
- Standard steel cage on all bearings listed below
- For any of your bearing requirements please contact us on 354 3651 or sales@soco.co.nz

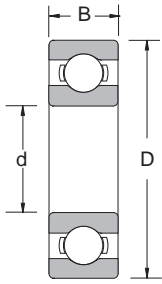


## DEEP GROOVE BALL BEARINGS

CODE	DIMENSIONS			LIST PRICE *
	d (mm)	D (mm)	B (mm)	
6000-2RSC3	10	26	8	\$10.35
6001-2RSC3	12	28	8	\$10.40
6002-2RSC3	15	32	9	\$11.30
6003-2RSC3	17	35	10	\$11.95
6004-2RSC3	20	42	12	\$17.88
6005-2RSC3	25	47	12	\$18.50
6006-2RSC3	30	55	13	\$26.48
6007-2RSC3	35	62	14	\$27.13
6008-2RSC3	40	68	15	\$28.45
6009-2RSC3	45	75	16	\$41.91
6010-2RSC3	50	80	16	\$51.12
6011-2RSC3	55	90	18	\$58.96
6012-2RSC3	60	95	18	\$67.61
6013-2RSC3	65	100	18	\$73.70
6014-2RSC3	70	110	20	\$84.18
6015-2RSC3	75	115	20	\$88.72
6016-2RSC3	80	125	22	\$174.24
6017-2RSC3	85	130	22	\$199.40
6018-2RSC3	90	140	24	\$239.46
6019-2RSC3	95	145	24	\$288.48
6020-2RSC3	100	150	24	\$301.05

# DEEP GROOVE BALL BEARINGS - 62 SERIES

PAGE 4

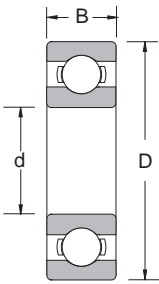


- We stock a range of bearings from multiple internationally renowned brands including NSK, FAG, Koyo and Timken
- Other styles and sizes are available including:
  - Miniature
  - Imperial EE, RLS, RMS series
  - Thin series 68 & 69
  - Steel shields & Snap ring
- Standard steel cage on all bearings listed below
- For any of your bearing requirements please contact us on 354 3651 or [sales@soco.co.nz](mailto:sales@soco.co.nz)



## DEEP GROOVE BALL BEARINGS

CODE	DIMENSIONS			LIST PRICE *
	d (mm)	D (mm)	B (mm)	
6200-2RSC3	10	30	9	\$10.00
6201-2RSC3	12	32	10	\$10.10
6202-2RSC3	15	35	11	\$10.16
6203-2RSC3	17	40	12	\$10.42
6204-2RSC3	20	47	14	\$13.43
6205-2RSC3	25	52	15	\$15.97
6206-2RSC3	30	62	16	\$27.01
6207-2RSC3	35	72	17	\$33.60
6208-2RSC3	40	80	18	\$43.73
6209-2RSC3	45	85	19	\$47.16
6210-2RSC3	50	90	20	\$52.20
6211-2RSC3	55	100	21	\$70.84
6212-2RSC3	60	110	22	\$110.37
6213-2RSC3	65	120	23	\$119.34
6214-2RSC3	70	125	24	\$137.43
6215-2RSC3	75	130	25	\$152.72
6216-2RSC3	80	140	26	\$219.52
6217-2RSC3	85	150	28	\$256.90
6218-2RSC3	90	160	30	\$287.25
6219-2RSC3	95	170	32	\$331.73
6220-2RSC3	100	180	34	\$425.19



- We stock a range of bearings from multiple internationally renowned brands including NSK, FAG, Koyo and Timken
- Other styles and sizes are available including:
  - Miniature
  - Imperial EE, RLS, RMS series
  - Thin series 68 & 69
  - Steel shields & Snap ring
- Standard steel cage on all bearings listed below
- For any of your bearing requirements please contact us on 354 3651 or [sales@soco.co.nz](mailto:sales@soco.co.nz)

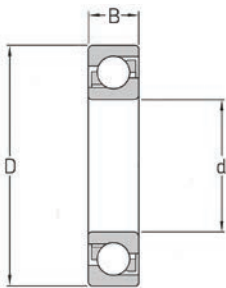


## DEEP GROOVE BALL BEARINGS

CODE	DIMENSIONS			LIST PRICE *
	d (mm)	D (mm)	B (mm)	
6300-2RSC3	10	35	11	\$14.18
6301-2RSC3	12	37	12	\$14.95
6302-2RSC3	15	42	13	\$15.80
6303-2RSC3	17	47	14	\$17.17
6304-2RSC3	20	52	15	\$18.50
6305-2RSC3	25	62	17	\$22.99
6306-2RSC3	30	72	19	\$36.27
6307-2RSC3	35	80	21	\$47.46
6308-2RSC3	40	90	23	\$61.64
6309-2RSC3	45	100	25	\$93.61
6310-2RSC3	50	110	27	\$109.91
6311-2RSC3	55	120	29	\$138.66
6312-2RSC3	60	130	31	\$203.34
6313-2RSC3	65	140	33	\$242.27
6314-2RSC3	70	150	35	\$299.01
6315-2RSC3	75	160	37	\$369.37
6316-2RSC3	80	170	39	\$416.42
6317-2RSC3	85	180	41	\$451.97
6318-2RSC3	90	190	43	\$625.49
6319-2RSC3	95	200	45	\$883.13
6320-2RSC3	100	215	47	\$1,212.15

# SINGLE ROW ANGULAR CONTACT BEARINGS - 72 SERIES

PAGE 6



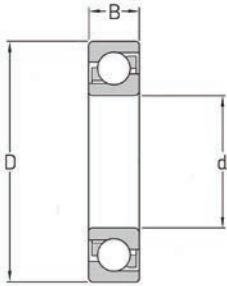
- We stock a range of bearings from multiple internationally renowned brands including NSK, FAG, Koyo and Timken
- Other styles and sizes are also available
- For any of your bearing requirements please contact us on 354 3651 or sales@soco.co.nz



## SINGLE ROW ANGULAR CONTACT BALL BEARINGS

CODE	DIMENSIONS			LIST PRICE
	d (mm)	D (mm)	B (mm)	
7200B	10	30	9	\$47.64
7201B	12	32	10	\$51.01
7202B	15	35	11	\$57.28
7203B	17	40	12	\$51.58
7204B	20	47	14	\$55.88
7205B	25	52	15	\$70.84
7206B	30	62	16	\$78.15
7207B	35	72	17	\$95.52
7208B	40	80	18	\$99.76
7209B	45	85	19	\$125.37
7210B	50	90	20	\$127.04
7211B	55	100	21	\$152.87
7212B	60	110	22	\$198.90
7213B	65	120	23	POA
7214B	70	125	24	POA





- We stock a range of bearings from multiple internationally renowned brands including NSK, FAG, Koyo and Timken
- Other styles and sizes are also available
- For any of your bearing requirements please contact us on 354 3651 or sales@soco.co.nz

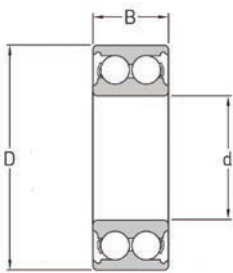


## SINGLE ROW ANGULAR CONTACT BALL BEARINGS

CODE	DIMENSIONS			LIST PRICE
	d (mm)	D (mm)	B (mm)	
7302B	15	42	13	\$57.34
7303B	17	47	14	\$61.55
7304B	20	52	15	\$65.43
7305B	25	62	17	\$81.79
7306B	30	72	19	\$102.69
7307B	35	80	21	\$121.94
7308B	40	90	23	\$146.21
7309B	45	100	25	\$176.12
7310B	50	110	27	\$229.04
7311B	55	120	29	\$276.00
7312B	60	130	31	POA
7313B	65	140	33	POA
7314B	70	150	35	POA

# DOUBLE ROW ANGULAR CONTACT BEARINGS - 32 SERIES

PAGE 8

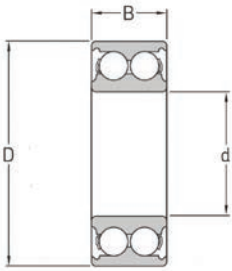


- We stock a range of bearings from multiple internationally renowned brands including NSK, FAG, Koyo and Timken
- Other styles and sizes are also available
- For any of your bearing requirements please contact us on 354 3651 or [sales@soco.co.nz](mailto:sales@soco.co.nz)



## DOUBLE ROW ANGULAR BALL BEARINGS

CODE	DIMENSIONS			LIST PRICE
	d (mm)	D (mm)	B (mm)	
3200-2RSC3	10	30	14	\$92.54
3201-2RSC3	12	32	15.9	\$105.25
3202-2RSC3	15	35	15.9	\$106.30
3203-2RSC3	17	40	17.5	\$107.50
3204-2RSC3	20	47	20.6	\$108.95
3205-2RSC3	25	52	20.6	\$110.93
3206-2RSC3	30	62	23.8	\$134.99
3207-2RSC3	35	72	27	\$246.27
3208-2RSC3	40	80	30.2	\$318.27
3209-2RSC3	45	85	30.2	\$328.43
3210-2RSC3	50	90	30.2	\$352.30
3211-2RSC3	55	100	33.3	\$368.66
3212-2RSC3	60	110	36.5	\$447.76



- We stock a range of bearings from multiple internationally renowned brands including NSK, FAG, Koyo and Timken
- Other styles and sizes are also available
- For any of your bearing requirements please contact us on 354 3651 or sales@soco.co.nz

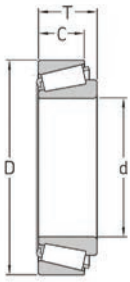


## DOUBLE ROW ANGULAR BALL BEARINGS

CODE	DIMENSIONS			LIST PRICE
	d (mm)	D (mm)	B (mm)	
3304-2RSC3	20	52	22.2	\$170.60
3305-2RSC3	25	62	25.4	\$195.60
3306-2RSC3	30	72	30.2	\$266.30
3307-2RSC3	35	80	34.9	\$318.27
3308-2RSC3	40	90	36.5	\$368.20
3309-2RSC3	45	100	39.7	\$531.34
3310-2RSC3	50	110	44.4	\$552.24
3311-2RSC3	55	120	49.2	\$763.94

# METRIC TAPERED ROLLER BEARINGS - 302 SERIES

PAGE 10



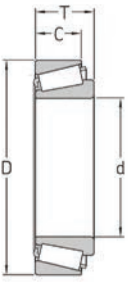
- We stock a range of bearings from multiple internationally renowned brands including NSK, FAG, Koyo and Timken
- Other styles and sizes are also available including imperial
- For any of your bearing requirements please contact us on 354 3651 or sales@soco.co.nz



## METRIC TAPERED ROLLER BEARINGS

CODE	DIMENSIONS				LIST PRICE
	d (mm)	D (mm)	T (mm)	C (mm)	
30202	15	35	11.75	9.25	POA
30203	17	40	13.25	11	\$18.36
30204	20	47	15.25	12	\$19.25
30205	25	52	16.25	13	\$20.54
30206	30	62	17.25	14	\$26.36
30207	35	72	18.25	15	\$35.97
30208	40	80	19.75	16	\$41.97
30209	45	85	20.75	16	\$50.84
30210	50	90	21.75	17	\$57.17
30211	55	100	22.75	18	\$79.28
30212	60	110	23.75	19	\$90.54
30213	65	120	24.75	20	\$125.10
30214	70	125	26.25	21	\$126.81
30215	75	130	27.25	22	\$144.85
30216	80	140	28.25	22	\$202.12
30217	85	150	30.5	24	\$240.60
30218	90	160	32.5	26	\$343.10
30219	95	170	34.5	27	\$365.20
30220	100	180	37	29	\$706.90





- We stock a range of bearings from multiple internationally renowned brands including NSK, FAG, Koyo and Timken
- Other styles and sizes are also available including imperial
- For any of your bearing requirements please contact us on 354 3651 or [sales@soco.co.nz](mailto:sales@soco.co.nz)

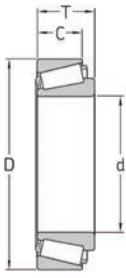


## METRIC TAPERED ROLLER BEARINGS

CODE	DIMENSIONS				LIST PRICE
	d (mm)	D (mm)	T (mm)	C (mm)	
30302	15	42	14.25	11	POA
30303	17	47	15.25	12	\$27.70
30304	20	52	16.25	13	\$28.50
30305	25	62	18.25	15	\$30.99
30306	30	72	20.75	16	\$37.46
30307	35	80	22.75	18	\$49.13
30308	40	90	25.25	20	\$63.97
30309	45	100	27.25	22	\$120.84
30310	50	110	29.25	23	\$135.40
30311	55	120	31.5	25	\$152.87
30312	60	130	33.5	26	\$200.30
30313	65	140	36	28	\$204.84
30314	70	150	38	30	\$324.26
30315	75	160	40	31	\$408.09
30316	80	170	42.5	33	\$412.50
30317	85	180	44.5	34	\$418.33
30318	90	190	46.5	36	\$837.76
30319	95	200	49.5	38	POA
30320	100	215	51.5	39	POA

# METRIC TAPERED ROLLER BEARINGS - 313 SERIES

PAGE 12

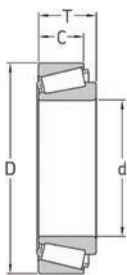


- We stock a range of bearings from multiple internationally renowned brands including NSK, FAG, Koyo and Timken
- Other styles and sizes are also available including imperial
- For any of your bearing requirements please contact us on 354 3651 or [sales@soco.co.nz](mailto:sales@soco.co.nz)



## METRIC TAPERED ROLLER BEARINGS

CODE	DIMENSIONS				LIST PRICE
	d (mm)	D (mm)	T (mm)	C (mm)	
31305	25	62	18.25	13	\$47.34
31306	30	72	20.75	14	\$49.04
31307	35	80	22.75	15	\$74.48
31308	40	90	25.25	17	\$89.10
31309	45	100	27.25	18	\$117.85
31310	50	110	29.25	19	\$133.73
31311	55	120	31.5	21	\$157.34
31312	60	130	33.5	22	\$222.78
31313	65	140	36	23	\$272.36
31314	70	150	38	25	\$342.60
31315	75	160	40	26	\$440.93
31316	80	170	42.5	27	\$727.25
31317	85	180	44.5	28	POA
31318	90	190	46.5	30	POA
31319	95	200	49.5	32	POA
31320	100	215	56.5	35	POA



- We stock a range of bearings from multiple internationally renowned brands including NSK, FAG, Koyo and Timken
- Other styles and sizes are also available including imperial
- For any of your bearing requirements please contact us on 354 3651 or [sales@soco.co.nz](mailto:sales@soco.co.nz)

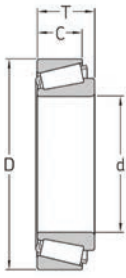


## METRIC TAPERED ROLLER BEARINGS

CODE	DIMENSIONS				LIST PRICE
	d (mm)	D (mm)	T (mm)	C (mm)	
32004 X	20	42	15	12	POA
32005 X	25	47	15	11.5	\$33.49
32006 X	30	55	17	13	\$35.61
32007 X	35	62	18	14	\$37.22
32008 X	40	68	19	14.5	\$46.42
32009 X	45	75	20	15.5	\$48.80
32010 X	50	80	20	15.5	\$55.52
32011 X	55	90	23	17.5	\$70.36
32012 X	60	95	23	17.5	\$92.00
32013 X	65	100	23	17.5	\$99.92
32014 X	70	110	25	19	\$144.12
32015 X	75	115	25	19	\$151.13
32016 X	80	125	29	22	\$185.55
32017 X	85	130	29	22	\$209.94
32018 X	90	140	32	24	\$245.76
32019 X	95	145	32	24	\$257.01
32020 X	100	150	32	24	\$268.20

# METRIC TAPERED ROLLER BEARINGS - 322 SERIES

PAGE 14



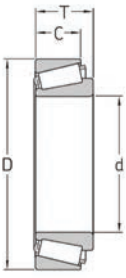
- We stock a range of bearings from multiple internationally renowned brands including NSK, FAG, Koyo and Timken
- Other styles and sizes are also available including imperial
- For any of your bearing requirements please contact us on 354 3651 or [sales@soco.co.nz](mailto:sales@soco.co.nz)



## METRIC TAPERED ROLLER BEARINGS

CODE	DIMENSIONS				LIST PRICE
	d (mm)	D (mm)	T (mm)	C (mm)	
32203	17	40	17.25	13	\$34.93
32204	20	47	19.25	15	\$45.76
32205	25	52	19.25	15	\$45.95
32206	30	62	21.25	17	\$46.20
32207	35	72	24.25	19	\$46.57
32208	40	80	24.75	19	\$48.78
32209	45	85	24.75	19	\$49.55
32210	50	90	24.75	19	\$52.36
32211	55	100	26.75	21	\$62.33
32212	60	110	29.75	24	\$117.01
32213	65	120	32.75	27	\$119.16
32214	70	125	33.25	27	\$176.99
32215	75	130	33.25	27	\$183.25
32216	80	140	35.25	28	\$196.00
32217	85	150	38.5	30	\$222.25
32218	90	160	42.5	34	\$253.07
32219	95	170	45.5	37	\$341.19
32220	100	180	49	39	\$763.31





- We stock a range of bearings from multiple internationally renowned brands including NSK, FAG, Koyo and Timken
- Other styles and sizes are also available including imperial
- For any of your bearing requirements please contact us on 354 3651 or [sales@soco.co.nz](mailto:sales@soco.co.nz)

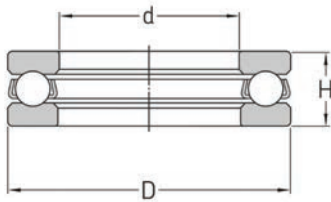


## METRIC TAPERED ROLLER BEARINGS

CODE	DIMENSIONS				LIST PRICE
	d (mm)	D (mm)	T (mm)	C (mm)	
32304	20	52	22.25	18	\$42.93
32305	25	62	25.25	20	\$49.40
32306	30	72	28.75	23	\$54.57
32307	35	80	32.75	25	\$59.50
32308	40	90	35.25	27	\$89.34
32309	45	100	38.25	30	\$133.73
32310	50	110	42.25	33	\$182.96
32311	55	120	45.5	35	\$210.12
32312	60	130	48.5	37	\$318.45
32313	65	140	51	39	\$374.06
32314	70	150	54	42	\$428.15
32315	75	160	58	45	\$487.31
32316	80	170	61.5	48	\$605.64
32317	85	180	63.5	49	\$1,010.09
32318	90	190	67.5	53	\$1,212.15
32319	95	200	71.5	55	\$1,424.99
32320	100	215	77.5	60	\$1,483.25

# SINGLE THRUST BALL BEARINGS - 511 SERIES

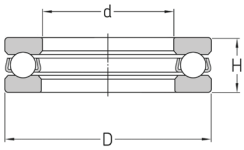
PAGE 16



- We stock a range of bearings from multiple internationally renowned brands including NSK, FAG and Koyo
- Other styles and sizes are also available
- For any of your bearing requirements please contact us on 354 3651 or sales@soco.co.nz



THRUST BALL BEARINGS				
CODE	DIMENSIONS			LIST PRICE
	d (mm)	D (mm)	H (mm)	
51100	10	24	9	\$23.94
51101	12	26	9	\$25.30
51102	15	28	9	\$27.58
51103	17	30	9	\$29.70
51104	20	35	10	\$32.06
51105	25	42	11	\$35.28
51106	30	47	11	\$35.94
51107	35	52	12	\$40.00
51108	40	60	13	\$49.52
51109	45	65	14	\$55.22
51110	50	70	14	\$59.76
51111	55	78	16	\$105.01
51112	60	85	17	\$133.31
51113	65	90	18	\$139.27
51114	70	95	18	\$174.87



- We stock a range of bearings from multiple internationally renowned brands including NSK, FAG and Koyo
- Other styles and sizes are also available
- For any of your bearing requirements please contact us on 354 3651 or sales@soco.co.nz

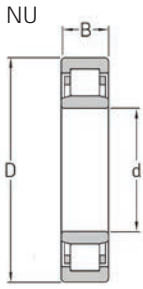


### THRUST BALL BEARINGS

CODE	DIMENSIONS			LIST PRICE
	d (mm)	D (mm)	H (mm)	
51200	10	26	11	\$29.43
51201	12	28	11	\$32.99
51202	15	32	12	\$35.73
51203	17	35	12	\$39.85
51204	20	40	14	\$42.10
51205	25	47	15	\$44.12
51206	30	52	16	\$44.63
51207	35	62	18	\$47.76
51208	40	68	19	\$77.34
51209	45	73	20	\$88.03
51210	50	78	22	\$104.51
51211	55	90	25	\$135.07
51212	60	95	26	\$146.54
51213	65	100	27	\$238.99
51214	70	105	27	\$242.20

# CYLINDRICAL ROLLER BEARINGS - 2 SERIES

PAGE 18

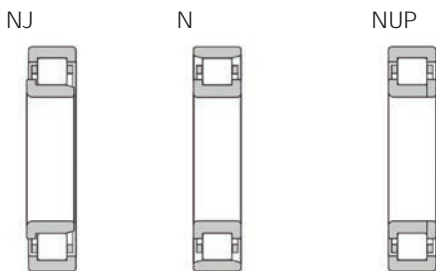


- We stock a range of bearings from multiple internationally renowned brands including NSK, FAG, Koyo and Timken
- Other styles and sizes are also available
- For any of your bearing requirements please contact us on 354 3651 or sales@soco.co.nz

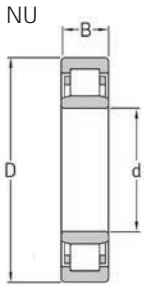


CYLINDRICAL ROLLER BEARINGS *				
CODE	DIMENSIONS			LIST PRICE
	d (mm)	D (mm)	B (mm)	
NU 202	15	35	11	\$74.03
NU 203	17	40	12	\$86.12
NU 204	20	47	14	\$88.70
NU 205	25	52	15	\$90.45
NU 206	30	62	16	\$95.50
NU 207	35	72	17	\$107.19
NU 208	40	80	18	\$138.90
NU 209	45	85	19	\$141.20
NU 210	50	90	20	\$144.39
NU 211	55	100	21	\$154.87
NU 212	60	110	22	\$202.63
NU 213	65	120	23	\$206.99
NU 214	70	125	24	\$223.28
NU 215	75	130	25	\$311.55
NU 216	80	140	26	\$334.33
NU 217	85	150	28	\$489.67
NU 218	90	160	30	\$526.96
NU 219	95	170	32	\$534.12
NU 220	100	180	34	\$726.66
NU 221	105	190	36	POA
NU 222	110	200	38	POA

\* Also available in different styles and cage types







- We stock a range of bearings from multiple internationally renowned brands including NSK, FAG, Koyo and Timken
- Other styles and sizes are also available
- For any of your bearing requirements please contact us on 354 3651 or [sales@soco.co.nz](mailto:sales@soco.co.nz)



CYLINDRICAL ROLLER BEARINGS *				
CODE	DIMENSIONS			LIST PRICE
	d (mm)	D (mm)	B (mm)	
NU 303	17	47	14	POA
NU 304	20	52	15	\$88.93
NU 305	25	62	17	\$95.40
NU 306	30	72	19	\$98.00
NU 307	35	80	21	\$102.87
NU 308	40	90	23	\$127.16
NU 309	45	100	25	\$163.43
NU 310	50	110	27	\$188.96
NU 311	55	120	29	\$220.54
NU 312	60	130	31	\$263.88
NU 313	65	140	33	\$297.37
NU 314	70	150	35	\$307.82
NU 315	75	160	37	\$365.13
NU 316	80	170	39	\$619.55
NU 317	85	180	41	\$635.55
NU 318	90	190	43	\$669.31
NU 319	95	200	45	\$753.82
NU 320	100	215	47	\$830.36
NU 321	105	225	49	POA
NU 322	110	240	50	POA

\* Also available in different styles and cage types

NJ



N

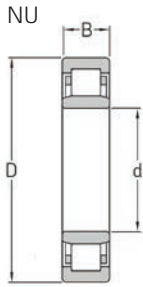


NUP



# CYLINDRICAL ROLLER BEARINGS - 22 SERIES

PAGE 20

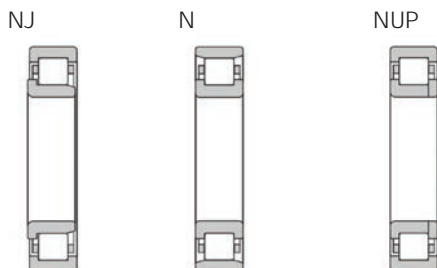


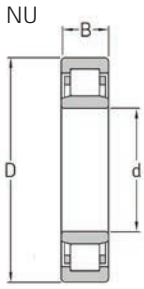
- We stock a range of bearings from multiple internationally renowned brands including NSK, FAG, Koyo and Timken
- Other styles and sizes are also available
- For any of your bearing requirements please contact us on 354 3651 or [sales@soco.co.nz](mailto:sales@soco.co.nz)



CYLINDRICAL ROLLER BEARINGS *				
CODE	DIMENSIONS			LIST PRICE
	d (mm)	D (mm)	B (mm)	
NU 2203	17	40	16	\$94.15
NU 2204	20	47	18	\$142.72
NU 2205	25	52	18	\$148.60
NU 2206	30	62	20	\$152.84
NU 2207	35	72	23	\$158.20
NU 2208	40	80	23	\$167.01
NU 2209	45	85	23	\$171.04
NU 2210	50	90	23	\$184.99
NU 2211	55	100	25	\$347.91
NU 2212	60	110	28	\$349.91
NU 2213	65	120	31	\$371.66
NU 2214	70	125	31	\$372.66
NU 2215	75	130	31	\$377.46
NU 2216	80	140	33	POA
NU 2217	85	150	36	POA
NU 2218	90	160	40	POA
NU 2219	95	170	43	POA
NU 2220	100	180	46	POA
NU 2222	110	200	53	POA

\* Also available in different styles and cage types



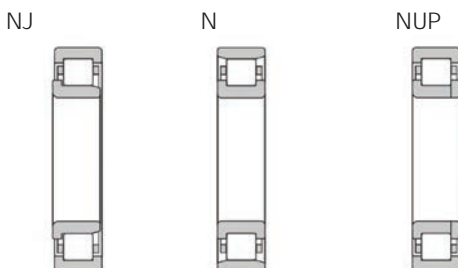


- We stock a range of bearings from multiple internationally renowned brands including NSK, FAG, Koyo and Timken
- Other styles and sizes are also available
- For any of your bearing requirements please contact us on 354 3651 or [sales@soco.co.nz](mailto:sales@soco.co.nz)



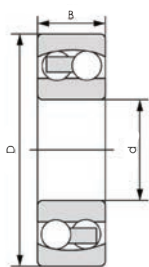
CYLINDRICAL ROLLER BEARINGS *				
CODE	DIMENSIONS			LIST PRICE
	d (mm)	D (mm)	B (mm)	
NU 2304	20	52	21	\$120.18
NU 2305	25	62	24	\$120.18
NU 2306	30	72	27	\$129.46
NU 2307	35	80	31	\$158.33
NU 2308	40	90	33	\$287.79
NU 2309	45	100	36	\$316.54
NU 2310	50	110	40	\$326.60
NU 2311	55	120	43	\$668.30
NU 2312	60	130	46	\$672.69
NU 2313	65	140	48	\$712.24
NU 2314	70	150	51	\$802.09
NU 2315	75	160	55	\$1,282.48
NU 2316	80	170	58	POA
NU 2317	85	180	60	POA
NU 2318	90	190	64	POA
NU 2319	95	200	67	POA
NU 2320	100	215	73	POA
NU 2322	110	240	80	POA

\* Also available in different styles and cage types



# SELF ALIGNING BALL BEARINGS - 12 SERIES

PAGE 22



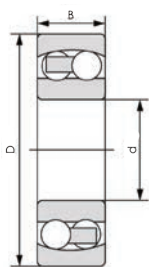
- We stock a range of bearings from multiple internationally renowned brands including NSK, FAG and Koyo
- Other styles and sizes are also available
- For any of your bearing requirements please contact us on 354 3651 or sales@soco.co.nz



SELF ALIGNING BALL BEARINGS *				
CODE	DIMENSIONS			LIST PRICE
	d (mm)	D (mm)	B (mm)	
108	8	22	7	\$42.81
1200	10	30	9	\$24.96
1201	12	32	10	\$26.36
1202	15	35	11	\$28.87
1203	17	40	12	\$31.85
1204	20	47	14	\$40.75
1205	25	52	15	\$51.97
1206	30	62	16	\$52.54
1207	35	72	17	\$62.90
1208	40	80	18	\$74.90
1209	45	85	19	\$78.90
1210	50	90	20	\$88.57
1211	55	100	21	\$97.19
1212	60	110	22	\$135.04

\* Available in tapered bore (suffix K) and other sizes





- We stock a range of bearings from multiple internationally renowned brands including NSK, FAG and Koyo
- Other styles and sizes are also available
- For any of your bearing requirements please contact us on 354 3651 or [sales@soco.co.nz](mailto:sales@soco.co.nz)



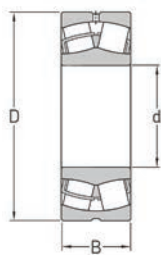
SELF ALIGNING BALL BEARINGS *				
CODE	DIMENSIONS			LIST PRICE
	d (mm)	D (mm)	B (mm)	
2201-2RS	12	32	14	\$108.96
2202-2RS	15	35	14	\$109.60
2203-2RS	17	40	16	\$110.27
2204-2RS	20	47	18	\$111.35
2205-2RS	25	52	18	\$112.96
2206-2RS	30	62	20	\$129.10
2207-2RS	35	72	23	\$186.93
2208-2RS	40	80	23	\$202.03
2209-2RS	45	85	23	\$232.84
2210-2RS	50	90	23	\$260.48
2211-2RS	55	100	25	\$345.25
2212-2RS	60	110	28	\$388.06

\* Available in tapered bore (suffix K) and other sizes

# SPHERICAL ROLLER BEARINGS - 222 SERIES

PAGE 24

Cylindrical bore



- We stock a range of bearings from multiple internationally renowned brands including NSK, FAG, Koyo and Timken
- Other styles and sizes are also available
- For any of your bearing requirements please contact us on 354 3651 or [sales@soco.co.nz](mailto:sales@soco.co.nz)

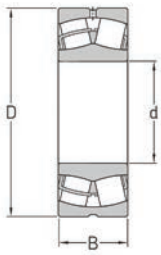


SPHERICAL ROLLER BEARINGS *				
CODE	DIMENSIONS			LIST PRICE
	d (mm)	D (mm)	B (mm)	
22205 E	25	52	18	\$182.75
22206 E	30	62	20	\$185.85
22207 E	35	72	23	\$201.97
22208 E	40	80	23	\$205.94
22209 E	45	85	23	\$219.85
22210 E	50	90	23	\$226.90
22211 E	55	100	25	\$237.88
22212 E	60	110	28	\$273.07
22213 E	65	120	31	\$326.00
22214 E	70	125	31	\$329.50
22215 E	75	130	31	\$333.88
22216 E	80	140	33	\$419.76
22217 E	85	150	36	\$432.50
22218 E	90	160	40	\$481.22
22219 E	95	170	43	POA
22220 E	100	180	46	POA

- Available in tapered bore (suffix K) and other sizes
- Please contact us for housing and other components



Cylindrical bore



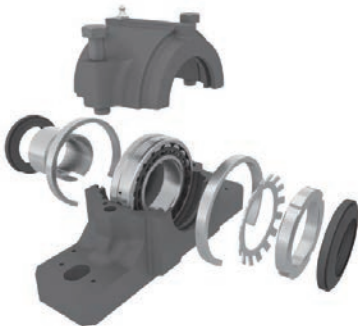
- We stock a range of bearings from multiple internationally renowned brands including NSK, FAG, Koyo and Timken
- Other styles and sizes are also available
- For any of your bearing requirements please contact us on 354 3651 or [sales@soco.co.nz](mailto:sales@soco.co.nz)



## SPHERICAL ROLLER BEARINGS \*

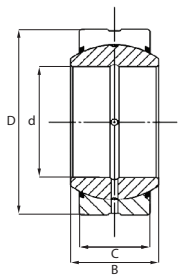
CODE	DIMENSIONS			LIST PRICE
	d (mm)	D (mm)	B (mm)	
22308 E	40	90	33	\$286.39
22309 E	45	100	36	\$289.01
22310 E	50	110	40	\$333.07
22311 E	55	120	43	\$374.09
22312 E	60	130	46	\$452.12
22313 E	65	140	48	\$485.97
22314 E	70	150	51	\$553.82
22315 E	75	160	55	\$638.51
22316 E	80	170	58	\$733.19
22317 E	85	180	60	\$919.85
22318 E	90	190	64	\$989.94
22319 E	95	200	67	POA
22320 E	100	215	73	POA

- Available in tapered bore (suffix K) and other sizes
- Please contact us for housing and other components



# SPHERICAL PLAIN BEARINGS - GE SERIES

PAGE 26

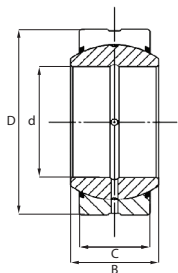


- We stock a range of bearings from multiple internationally renowned brands
- Other styles and sizes are also available including imperial
- For any of your bearing requirements please contact us on 354 3651 or [sales@soco.co.nz](mailto:sales@soco.co.nz)



## SPHERICAL PLAIN BEARINGS

CODE	DIMENSIONS				LIST PRICE
	d (mm)	D (mm)	B (mm)	C (mm)	
GE15ES-2RS	15	26	12	9	\$9.73
GE17ES-2RS	17	30	14	10	\$10.42
GE20ES-2RS	20	35	16	12	\$17.55
GE25ES-2RS	25	42	20	16	\$17.61
GE30ES-2RS	30	47	22	18	\$17.79
GE35ES-2RS	35	55	25	20	\$18.21
GE40ES-2RS	40	62	28	22	\$22.24
GE45ES-2RS	45	68	32	25	\$26.72
GE50ES-2RS	50	75	35	28	\$26.81
GE60ES-2RS	60	90	44	36	\$54.72
GE70ES-2RS	70	105	49	40	\$81.58
GE80ES-2RS	80	120	55	45	\$113.52
GE90ES-2RS	90	130	60	50	POA
GE100ES-2RS	100	150	70	55	POA



- We stock a range of bearings from multiple internationally renowned brands
- Other styles and sizes are also available including imperial
- For any of your bearing requirements please contact us on 354 3651 or sales@soco.co.nz

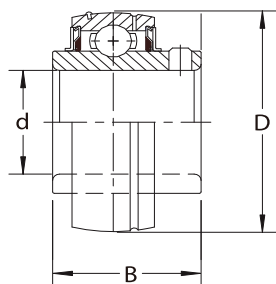


## SPHERICAL PLAIN BEARINGS

CODE	DIMENSIONS				LIST PRICE
	d (mm)	D (mm)	B (mm)	C (mm)	
GEG15ES-2RS	15	30	16	10	\$52.63
GEG17ES-2RS	17	35	20	12	\$60.81
GEG20ES-2RS	20	42	25	16	\$62.20
GEG25ES-2RS	25	47	28	18	\$64.50
GEG30ES-2RS	30	55	32	20	\$69.79
GEG35ES-2RS	35	62	35	22	\$74.60
GEG40ES-2RS	40	68	40	25	\$84.66
GEG45ES-2RS	45	75	43	28	\$99.46
GEG50ES-2RS	50	90	56	36	\$169.79
GEG60ES-2RS	60	105	63	40	\$330.99
GEG70ES-2RS	70	120	70	45	POA
GEG80ES-2RS	80	130	75	50	POA
GEG90ES-2RS	90	150	85	55	POA
GEG100ES-2RS	100	160	85	55	POA

# INSERT GRUB SCREW BEARINGS - UC SERIES

PAGE 28



- We stock a range of bearings from multiple internationally renowned brands
- Other styles and sizes are also available
- Measurement conversion table is on page 37
- Housing options are on page 36
- For any of your bearing requirements please contact us on 354 3651 or sales@soco.co.nz

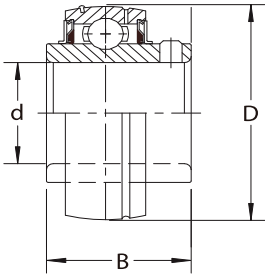


## IMPERIAL INSERT GRUB SCREW BEARINGS \*

CODE	DIMENSIONS			LIST PRICE
	d (inches)	D (mm)	B (mm)	
UC201-008	1/2	47	31	\$42.66
UC202-010	5/8	47	31	\$42.66
UC204-012	3/4	47	31	\$39.43
UC205-014	7/8	52	34.1	\$46.90
UC205-015	15/16	52	34.1	\$46.90
UC205-100	1	52	34.1	\$38.66
UC206-102	1 1/8	62	38.1	\$58.00
UC206-103	1 3/16	62	38.1	\$58.00
UC206-104	1 1/4	62	38.1	\$52.81
UC207-104	1 1/4	72	42.9	\$58.51
UC207-105	1 5/16	72	42.9	\$71.16
UC207-106	1 3/8	72	42.9	\$61.79
UC207-107	1 7/16	72	42.9	\$61.79
UC208-108	1 1/2	80	49.2	\$70.00
UC209-110	1 5/8	85	49.2	\$98.51
UC209-111	1 11/16	85	49.2	\$98.51
UC209-112	1 3/4	85	49.2	\$89.04
UC210-114	1 7/8	90	51.6	\$96.12
UC211-200	2	100	55.6	\$120.51
UC212-204	2 1/4	110	65.1	\$180.45
UC212-206	2 3/8	110	65.1	\$180.45
UC213-208	2 1/2	120	65.1	\$196.60
UC214-212	2 3/4	125	74.6	\$268.69
UC215-300	3	130	77.8	\$314.60

\* Some sizes are also available in stainless steel





- We stock a range of bearings from multiple internationally renowned brands
- Other styles and sizes are also available
- Measurement conversion table is on page 37
- Housing options are on page 36
- For any of your bearing requirements please contact us on 354 3651 or sales@soco.co.nz



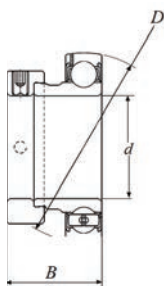
## METRIC INSERT GRUB SCREW BEARINGS \*

CODE	DIMENSIONS			LIST PRICE
	d (mm)	D (mm)	B (mm)	
UC201	12	47	31	\$42.66
UC202	15	47	31	\$42.66
UC203	17	47	31	\$42.66
UC204	20	47	31	\$34.48
UC205	25	52	34.1	\$38.66
UC206	30	62	38.1	\$45.97
UC207	35	72	42.9	\$58.51
UC208	40	80	49.2	\$70.00
UC209	45	85	49.2	\$79.40
UC210	50	90	51.6	\$87.25
UC211	55	100	55.6	\$117.01
UC212	60	110	65.1	\$162.69
UC213	65	120	65.1	\$192.99
UC214	70	125	74.6	\$253.97
UC215	75	130	77.8	\$267.46
UC216	80	140	82.6	\$355.76
UC217	85	150	85.7	\$429.43
UC218	90	160	96	\$582.09

\* Some sizes are also available in stainless steel

# INSERT ECCENTRIC LOCKING COLLAR BEARINGS - AEL SERIES

PAGE 30



- We stock a range of bearings from multiple internationally renowned brands
- Other styles and sizes are also available
- Measurement conversion table is on page 37
- Housing options are on page 36
- For any of your bearing requirements please contact us on 354 3651 or [sales@soco.co.nz](mailto:sales@soco.co.nz)

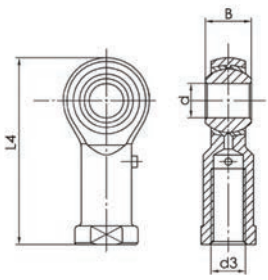


## IMPERIAL INSERT ECCENTRIC LOCKING COLLAR BEARINGS

CODE	DIMENSIONS			LIST PRICE
	d (inches)	D (mm)	B (mm)	
AEL201-008	1/2	40	28.6	\$38.78
AEL202-009	9/16	40	28.6	\$38.78
AEL202-010	5/8	40	28.6	\$38.78
AEL203-011	11/16	40	28.6	\$38.78
AEL204-012	3/4	47	31	\$39.70
AEL205-013	13/16	52	31	\$42.00
AEL205-014	7/8	52	31	\$42.00
AEL205-015	15/16	52	31	\$42.00
AEL205-100	1	52	31	\$40.63
AEL206-101	1 1/16	62	35.7	\$54.45
AEL206-102	1 1/8	62	35.7	\$54.45
AEL206-103	1 3/16	62	35.7	\$52.06
AEL206-104	1 1/4	62	35.7	\$55.16
AEL207-104	1 1/4	72	38.9	\$67.73
AEL207-105	1 5/16	72	38.9	\$71.52
AEL207-106	1 3/8	72	38.9	\$67.73
AEL207-107	1 7/16	72	38.9	\$71.52
AEL208-108	1 1/2	80	43.7	\$80.90
AEL208-109	1 9/16	80	43.7	\$80.90

## METRIC INSERT ECCENTRIC LOCKING COLLAR BEARINGS

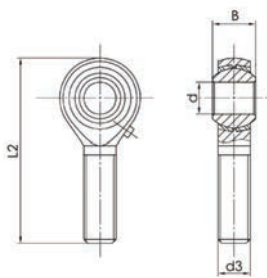
CODE	DIMENSIONS			LIST PRICE
	d (mm)	D (mm)	B (mm)	
AEL201	12	40	28.6	\$38.78
AEL202	15	40	28.6	\$38.78
AEL203	17	40	28.6	\$38.78
AEL204	20	47	31	\$38.78
AEL205	25	52	31	\$40.66
AEL206	30	62	35.7	\$52.45
AEL207	35	72	38.9	\$71.52
AEL208	40	80	43.7	\$73.13



- We stock a range of bearings from multiple internationally renowned brands
- Other sizes are also available including imperial
- Different materials are available
- For left hand thread suffix "L" to be added to the bearing number
- For any of your bearing requirements please contact us on 354 3651 or sales@soco.co.nz



FEMALE ROD ENDS					
CODE	DIMENSIONS				LIST PRICE
	d (mm)	B (mm)	d3 (mm)	L4 (mm)	
PHS6	6	9	M6 x 1	39	\$19.67
PHS8	8	12	M8 x 1.25	47	\$19.67
PHS10	10	14	M10 x 1.5	56	\$21.04
PHS12	12	16	M12 x 1.75	65	\$22.45
PHS14	14	19	M14 x 2	74	\$26.87
PHS15	15	20	M14 x 2	79	\$35.37
PHS16	16	21	M16 x 2	83	\$36.24
PHS17	17	22	M16 x 1.5	87	\$44.63
PHS18	18	23	M18 x 1.5	92	\$47.37
PHS20	20	25	M20 x 1.5	100	\$55.94
PHS22	22	28	M22 x 1.5	109	POA
PHS25	25	31	M24 x 2	124	POA

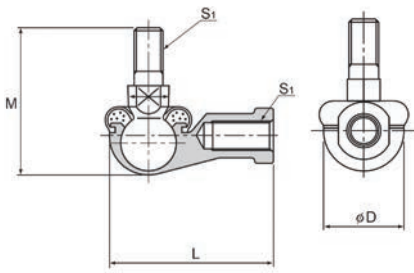


- We stock a range of bearings from multiple internationally renowned brands
- Other sizes are also available including imperial
- Different materials are available
- For left hand thread suffix "L" to be added to the bearing number
- For any of your bearing requirements please contact us on 354 3651 or sales@soco.co.nz



## MALE ROD ENDS

CODE	DIMENSIONS				LIST PRICE
	d (mm)	B (mm)	d3 (mm)	L2 (mm)	
POS6	6	9	M6 x 1	45	\$18.24
POS8	8	12	M8 x 1.25	53	\$19.67
POS10	10	14	M10 x 1.5	61	\$21.04
POS12	12	16	M12 x 1.75	69	\$22.69
POS14	14	19	M14 x 2	77	\$24.57
POS15	15	20	M14 x 2	81	\$29.43
POS16	16	21	M16 x 2	85	\$29.43
POS17	17	22	M16 x 1.5	89	\$46.27
POS18	18	23	M18 x 1.5	93	\$48.81
POS20	20	25	M20 x 1.5	101	\$52.40
POS22	22	28	M22 x 1.5	109	POA
POS25	25	31	M24 x 2	124	POA

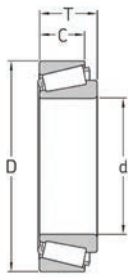


- We stock a range of bearings from multiple internationally renowned brands
- Other sizes are also available including imperial
- Different materials are available
- For any of your bearing requirements please contact us on 354 3651 or sales@soco.co.nz

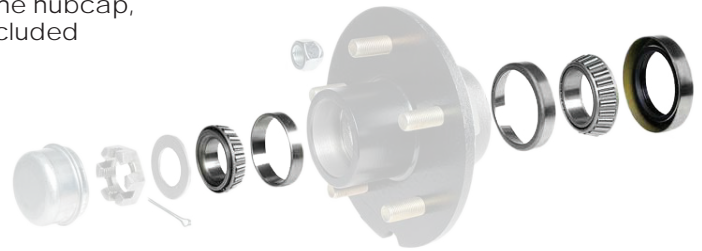


### STUDED ROD ENDS

CODE	DIMENSIONS				LIST PRICE
	L (mm)	D (mm)	M (mm)	S1 (mm)	
RBL 6	40	19	35.5	M6 x 1	\$16.48
RBL 8	48	23	42.5	M8 x 1.25	\$18.81
RBL 10	57	27	50.5	M10 x 1.25	\$24.57
RBL 10BD	57	27	56.5	M10 X 1.5	\$24.57
RBL 12	66	31	57.5	M12 x 1.25	\$24.57
RBL 12BD	66	31	64.5	M12 X 1.75	\$32.00
RBL 14	75	35	73.5	M14 x 1.5	POA
RBL 16	84	39	79.5	M16 x 1.5	POA
RBL 18	93	44	90	M18 x 1.5	POA
RBL 20	99	44	90	M20 x 1.5	POA
RBL 22	109	50	95	M22 x 1.5	POA



- Kits come with bearings and seals only. The hubcap, washer, castle nut and split pin are not included



TRAILER WHEEL BEARING KITS						
CODE (SOCO #)	CODE	CONTENTS	DIMENSIONS			LIST PRICE
			d (mm)	D (mm)	T (mm)	
KIT2980	TWK03	30204	20	47	15.25	\$39.90
		30205	25	52	16.25	
		30X52X7 seal				
KIT2981	TWK01L	LM11949/10	19.05	45.237	15.494	\$39.90
		L44600LC/10 Sealed Cone	34.798	50.292	14.224	
KIT2982	TWK01	LM11949/10	19.05	45.237	15.494	\$39.90
		L44642/10	25.4	50.292	14.224	
		PR6695 seal				
KIT2983	TWK02L	LM11949/10	19.05	45.237	15.494	\$39.90
		LM67000LA/10 Sealed Cone	31.75	59.131	15.875	
KIT2984	TWK02	LM11949/10	19.05	45.237	15.494	\$39.90
		LM67048/10	31.75	59.131	15.875	
		PR6641 seal				
KIT2985	TWK03L	30205	25	52	16.25	\$39.90
		30205	25	52	16.25	
		30X52X7 seal				
KIT2989	TWK05	LM11949/10	19.05	45.237	15.494	\$52.50
		LM48548/10	34.925	65.088	13.97	
		PR6697 seal				
KIT2987B/L	TWK07	L44649/10	26.988	50.292	14.224	\$52.50
		L68149/10	35	59.131	15.875	
		42X65X8 seal				
KIT2988	TWK04	30204	20	47	15.25	\$52.50
		30206	30	62	17.25	
		35X62X7 seal				
KIT2953	-	LM11949/10	19.05	45.237	15.494	\$52.50
		LM67048/10	31.75	59.131	15.875	
		PR6518 seal				
KIT2749	-	L44649/10	26.988	50.292	14.224	\$79.80
		LM11749/10	17.463	39.878	13.843	
		40X54X5 seal				



INSERT BEARINGS					
FAG	ASAHI	SKF	NSK	NACHI	FYH
562	UC	YAR	UC	UC	UC
162	KH	YET	AEL	KH	SA
362	UG	YEL	UEL	UG	NA
AELS	KHR	-	AELS	-	SAA
UCS	SER	-	UCS	SER	ER
AS	B	YAT	AS	B	SB
562K	UK	YSA	UK	UK	UK
UCX	UCX	-	UCX	UCX	UCX

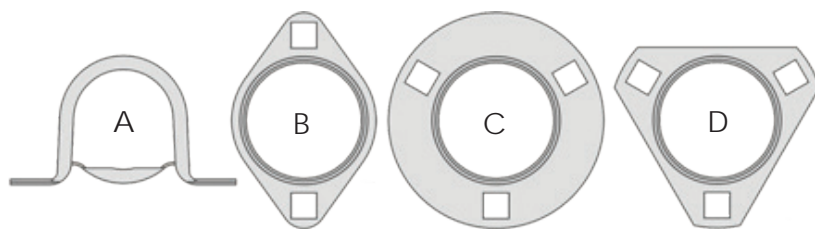
HOUSINGS					
FAG	ASAHI	SKF	NSK	NACHI	FYH
P	P	SY	P	P	P
PX	PX	-	PX	PX	PX
F	F	FY	F	F	F
FX	FX	-	FX	FX	FX
FL	FL	FYTB	FL	FL	FL
FB	LFL	-	FB	LFL	LF
T	T	TU	T	T	T
C	C	-	C	C	C
HP	PH	-	HP	PH	PH
UP	PA	SYF	UP	PA	PA
FA	FA	-	FA	FA	FA
FC	FC	FYC	FC	FC	FC
FCX	FCX	-	FCX	-	FCX
FK	FK	-	FH	FK	FB
HB	ECH	-	HB	ECH	HA



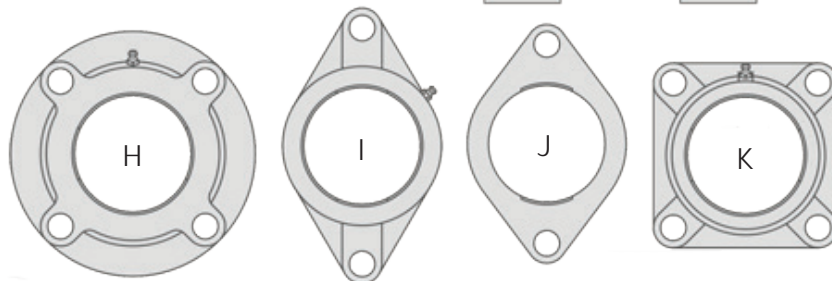
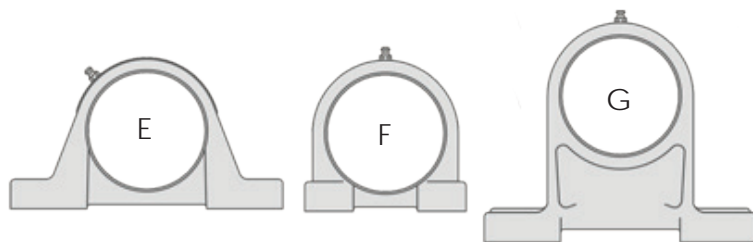
# INSERT BEARING HOUSING TYPES

PAGE 36

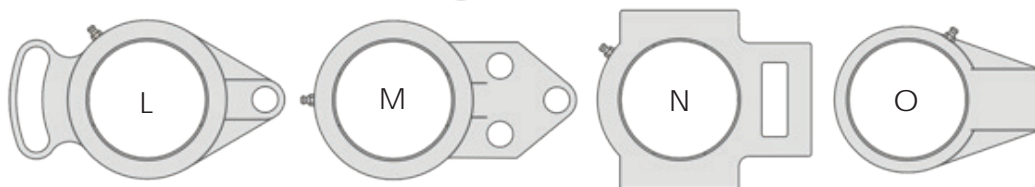
- Available in different styles and sizes
- A - D are pressed steel
- E - O are cast iron, some styles are also available in thermoplastic or stainless steel



Pressed steel housings



Cast iron housings



- A. Pillow block
- B. 2 Bolt flange
- C. 3 Bolt flange round
- D. 3 Bolt flange triangular
- E. Pillow block
- F. Tapped base pillow block
- G. High pillow base
- H. 4 Bolt round spigoted
- I. 2 Bolt flange
- J. Light 2 bolt flange
- K. 4 Bolt flange, square
- L. Adjustable 2 bolt flange
- M. 3 Bolt offset flange
- N. Take-up
- O. Hanger

INCH		0"	1"	2"	3"	4"	5"	6"	7"	8"
FRACTION	DECIMAL									
0	0.000	0.000	25.400	50.800	76.200	101.600	127.000	152.400	177.800	203.200
1/32	0.031	0.794	26.194	51.594	76.994	102.394	127.794	153.194	178.594	203.994
1/16	0.063	1.588	26.988	52.388	77.788	103.188	128.588	153.988	179.388	204.788
3/32	0.094	2.381	27.781	53.181	78.581	103.981	129.381	154.781	180.181	205.581
1/8	0.125	3.175	28.575	53.975	79.375	104.775	130.175	155.575	180.975	206.375
5/32	0.156	3.969	29.369	54.769	80.169	105.569	130.969	156.369	181.769	207.169
3/16	0.188	4.763	30.163	55.563	80.963	106.363	131.763	157.163	182.563	207.963
7/32	0.219	5.556	30.956	56.356	81.756	107.156	132.556	157.956	183.356	208.756
1/4	0.250	6.350	31.750	57.150	82.550	107.950	133.350	158.750	184.150	209.550
9/32	0.281	7.144	32.544	57.944	83.344	108.744	134.144	159.544	184.944	210.344
5/16	0.313	7.938	33.338	58.738	84.138	109.538	134.938	160.338	185.738	211.138
11/32	0.344	8.731	34.131	59.531	84.931	110.331	135.731	161.131	186.531	211.931
3/8	0.375	9.525	34.925	60.325	85.725	111.125	136.525	161.925	187.325	212.725
13/32	0.406	10.319	35.719	61.119	86.519	111.919	137.319	162.719	188.119	213.519
7/16	0.438	11.113	36.513	61.913	87.313	112.713	138.113	163.513	188.913	214.313
15/32	0.469	11.906	37.306	62.706	88.106	113.506	138.906	164.306	189.706	215.106
1/2	0.500	12.700	38.100	63.500	88.900	114.300	139.700	165.100	190.500	215.900
17/32	0.531	13.494	38.894	64.294	89.694	115.094	140.494	165.894	191.294	216.694
9/16	0.563	14.288	39.688	65.088	90.488	115.888	141.288	166.688	192.088	217.488
19/32	0.594	15.081	40.481	65.881	91.281	116.681	142.081	167.481	192.881	218.281
5/8	0.625	15.875	41.275	66.675	92.075	117.475	142.875	168.275	193.675	219.075
21/32	0.656	16.669	42.069	67.469	92.869	118.269	143.669	169.069	194.469	219.869
11/16	0.688	17.463	42.863	68.263	93.663	119.063	144.463	169.863	195.263	220.663
23/32	0.719	18.256	43.656	69.056	94.465	119.856	145.256	170.656	196.056	221.456
3/4	0.750	19.050	44.450	69.850	95.250	120.650	146.050	171.450	196.850	222.250
25/32	0.781	19.844	45.244	70.644	96.044	121.444	146.844	172.244	197.644	223.044
13/16	0.813	20.638	46.038	71.438	96.838	122.238	147.638	173.038	198.438	223.838
27/32	0.844	21.431	46.831	72.231	97.631	123.031	148.431	173.831	199.231	224.631
7/8	0.875	22.225	47.625	73.025	98.425	123.825	149.225	174.625	200.025	225.425
29/32	0.906	23.019	48.419	73.819	99.219	124.619	150.019	175.419	200.819	226.219
15/16	0.938	23.813	49.213	74.613	100.013	125.413	150.813	176.213	201.613	227.013
31/32	0.969	24.606	50.006	75.406	100.806	126.206	151.606	177.006	202.406	227.806

# WHAT A BEARING NUMBER MEANS

PAGE 38

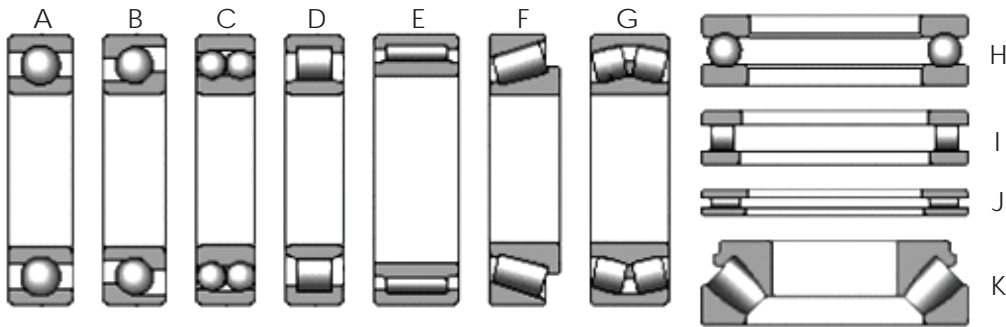
This is the core base line bearing part number that you will be predominately working with. For other codes or if part of the code is missing or has additional letters and numbers at any part of the code, this often means it is a specialised bearing or is specific to the bearings application.

6	3	05	2RS	C3
Pos 1	Pos 2	Pos 3-4	Pos 5-8	Pos 9

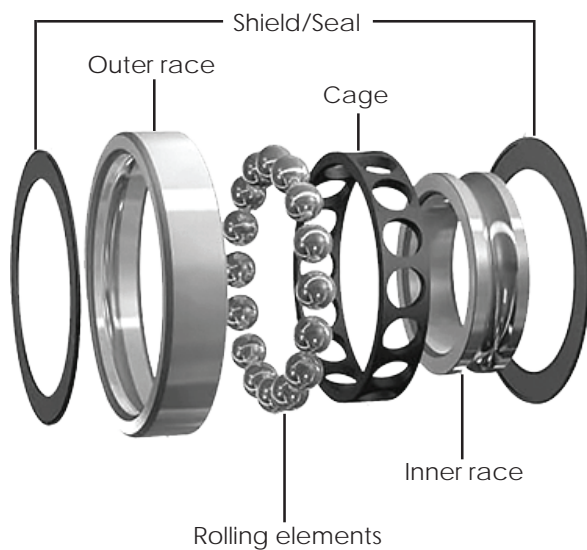
Type of Bearing (Pos 1)		Bearing Load Series (Pos 2)		Bore Size (Pos 3-4)		
Bearing Type	Bearing Name	Series Code	Series Description	Third & Fourth Digits	Bore Size (mm)	
1	Self-aligning ball bearing	0	Extra light	00	10	
2	Spherical Roller Bearing	1	Extra light	01	12	
3	Double row Angular contact Ball Bearing	2	Light	02	15	
4	Double row ball bearing	3	Medium	03	17	
5	Thrust ball bearing	4	Heavy	From here after		
6	Single row deep groove ball bearing	8	Extra thin section	04	(x5)	20
7	Single row angular contact ball bearing	9	Very thin section	05	(x5)	25
32/T	Tapered roller bearing			06	(x5)	30
R	Inch bearing			And so on ...		
N	Cylindrical roller bearing					
NN	Double row roller bearing					
NA	Needle roller bearing					
BK	Needle roller bearing with closed end (drawn cup)					
HK	Needle roller bearing with open ends (drawn cup)					
K	Needle roller and cage thrust assembly					
QJ	Four-point contact ball bearings					

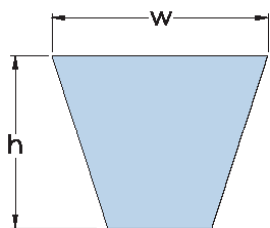
Bearing Seal (Pos 5-8)		Clearance (Pos 9)	
Code	Description	Code	Description
2RS	Double rubber sealed (contact)	C1	Clearance smaller than C2
2RS1	Double rubber sealed (contact)	C2	Clearance smaller than normal
2RSH	Double rubber sealed (contact)	CN or no marking	Normal bearing clearance (not indicated)
DDU	Double rubber sealed (contact)	C3	Clearance larger than normal
LLU	Double rubber sealed (contact)	C4	Clearance larger than C3
2RSR	Double rubber sealed (contact)	C5	Clearance larger than C4
VV	Double rubber sealed (non-contact)		
LLB	Double rubber sealed (non-contact)		
ZZ	Double shielded		
2Z	Double shielded		
Z	Single shield		

Note: Cages are available in various material types; brass, steel or polyamide.



- A. Deep groove ball bearings
- B. Angular contact ball bearings
- C. Self-aligning ball bearings
- D. Cylindrical roller bearings
- E. Needle roller bearings
- F. Tapered roller bearings
- G. Spherical roller bearings
- H. Thrust ball bearings
- I. Cylindrical roller thrust bearings
- J. Needle roller thrust bearings
- K. Spherical roller thrust bearings





- We stock a range of A, B, SPA, SPB belts as well as timing belts
- Other styles we also have available include:
  - C, SPC belts
  - Cogged belts
  - Banded belts

BELTS		
TYPE	DIMENSIONS	
	w (mm)	h (mm)
SPZ	9.7	8
SPA	12.7	10
SPB	16.3	13
SPC	22	18

Z	10	6
A	13	8
B	17	11
C	22	14

## PULLEY TYPES

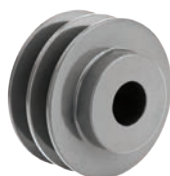
- We stock a range of pulleys which include:
  - Taperlock pulleys
  - Biloc pulleys
- Other styles are also available



A.



B.

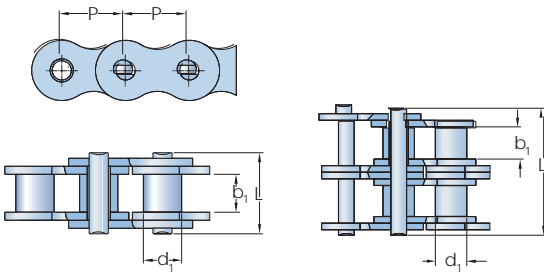


C.



D.

- A. Single groove taperlock pulley
- B. Multi groove taperlock pulley
- C. Pilot bore pulley
- D. Biloc arrangement pulley



- We stock a range of Tsubaki and Kana chain available in British standard, American standard, simplex, duplex, triplex.
- Other styles we also have available include:
  - Conveyor chain
  - Stainless chain
  - Corrosion resistant

CHAINS				
TYPE	DIMENSIONS			
	Pitch P (mm)	Roller Diameter d1 (mm)	Width between plates b1 (mm)	Pin length L (mm)
ANSI 41-1	12.70	7.77	6.25	13.75
ANSI 40-1	12.70	7.95	7.85	16.60
ANSI 50-1	15.88	10.16	9.40	20.70
ANSI 60-1	19.05	11.91	12.57	25.90
ANSI 80-1	25.40	15.88	15.75	32.70
ANSI 100-1	31.75	19.05	18.90	40.40
ANSI 120-1	38.10	22.23	25.22	50.30

BS 06B-1	9.53	6.35	5.72	13.15
BS 08B-1	12.70	8.51	7.75	16.70
BS 10B-1	15.88	10.16	9.65	19.50
BS 12B-1	19.05	12.07	11.68	22.50
BS 16B-1	25.40	15.88	17.02	36.10
BS 20B-1	31.75	19.05	19.56	41.30
BS 24B-1	38.10	25.40	25.40	53.40

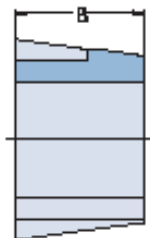
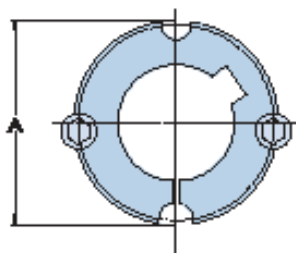
## SPROCKET TYPES

- We stock a range of sprockets in pilot bored
- We can also bore and key on site



- A. Simplex, pilot bore
- B. Simplex, taper bushed
- C. Duplex, standard
- D. Triplex, standard

1008 - 3020



- We stock a comprehensive range of taperlock bushes in both metric and imperial

TAPERLOCK BUSHES				
SIZE	BORE		DIMENSIONS	
	Min (mm)	Max (mm)	A (mm)	B (mm)
1008	9	25	35.2	22.2
1108	9	28	38.4	22.2
1210	11	32	47.6	25.4
1610	14	42	57.2	25.4
2012	14	50	69.9	31.8
2517	16	60	85.7	44.5
3020	25	75	108	50.8

3535	35	90	127.0	89.0
4040	40	100	146.0	102.0
4545	55	120	161.0	114.0

## COUPLING TYPES

- We stock a range of L-Jaw pre-bored couplings
- Other styles we also have available include:
  - Tyre couplings
  - HRC couplings
  - Centaflex couplings
  - Pin & Bush couplings



A.



B.



C.



D.



E.



F.



G.



H.

- A. Grid coupling
- B. Gear coupling
- C. Tyre coupling
- D. Chain coupling

- E. Rigid coupling
- F. HRC coupling
- G. Jaw coupling
- H. Universal coupling



This image shows a single sheet of white paper with horizontal ruling lines. The lines are evenly spaced and run across the width of the page. There are no margins, text, or other markings on the paper.

## OUR TEAM

The SOCO team are experienced and qualified to offer technical advice on a range of products. For any inquiry please contact us on 06 354 3651, [sales@soco.co.nz](mailto:sales@soco.co.nz) or visit us at 471 Tremain Avenue, Palmerston North



David Odering  
Managing Director



Dean Berquist  
Bearing Department  
Manager



Ariana Slack  
Customer Service



Peter Torrance  
Sales Representative



Rose Divinagracia  
Administrator



Kevin Mai  
Workshop Foreman



Ivan Hansen  
Workshop Technician



Bryan Gilchrist  
Workshop Service  
Technician



Eric Stagg  
Workshop Service  
Technician



Fiona Odering  
Marketing



Ruby



Electric Motors | Pumps | Drives | Bearings | Power Transmission | Workshop Services  
06 354 3651 | [sales@soco.co.nz](mailto:sales@soco.co.nz) | [www.soco.co.nz](http://www.soco.co.nz) | 471 Tremain Avenue, Palmerston North

**Price List** - Prices shown may vary depending on brand, are ex-warehouse, exclude gst and may change without notice. Terms of trade are available at [www.soco.co.nz/terms-and-conditions](http://www.soco.co.nz/terms-and-conditions). Freight charges may apply. Not all items are held in stock; ordered on request. Images shown may differ from actual. Dimensions stated are a general guide only, please refer to product manual.



For well over a century, the Dodge line of bearings, gearing and power transmission components have helped manufacturers, OEMs and producers in numerous industries increase the productivity and profitability of their operations. By focusing on each industry and concentrating on its specific needs, Dodge have developed innovative product solutions and advanced technologies that help improve output, decrease downtime and enhance system value.



FAG bearings have been synonymous with high quality for over 120 years. German designed FAG offer a broad range of bearing products that includes rolling and plain bearings, linear and direct drive technology, ranging from high-speed and high-precision bearings with small diameters to large-size bearings several meters wide. FAG provide bearing solutions for a range of industry.



Koyo is well known with a focus and commitment to deliver customers with high quality products and the best solution. By combining technology with design engineering expertise, Koyo are able to offer a breadth of advanced bearings and solutions. Koyo bearings are found virtually anywhere where accurate rotational control is required. Many bearings are specially developed to function with optimum efficiency in harsh environments such as weightless or extremely corrosive conditions.



NSK is a manufacturer of industrial machinery bearings globally and the largest in Japan. They provide products and solutions to customers in a wide array of industries around the world. All of NSK's bearings are designed in mind to be compact, lightweight, reduce of friction loss, long service life and high reliability. With this NSK's bearing feature, the machinery can benefit less energy, increased production efficiency and contributes significantly to environment conservation.



Timken engineered bearings feature precision tolerances, proprietary internal geometries and quality materials. Our tapered, spherical, cylindrical, thrust, ball, plain, miniature, precision and housed unit bearings deliver strong performance, consistently and reliably.



Electric Motors | Pumps | Drives | Bearings | Power Transmission | Workshop Services

06 354 3651 | [sales@soco.co.nz](mailto:sales@soco.co.nz) | [www.soco.co.nz](http://www.soco.co.nz)  
471 Tremain Avenue, Palmerston North